

LEARNS Work Groups Meeting #2

May 25th, 2023

Meeting Objectives and Norms

Today's objectives

- ▶ Review ADE process
- ▶ Review information guides that will be provided to students and families, and provide feedback

Norms

Prior to Meeting

- ▶ ADE will send out agenda at least 3 business days in advance of each meeting.
- ▶ Members review all materials and come prepared to share feedback.

During Meeting










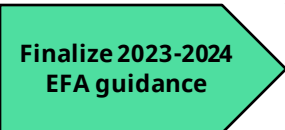
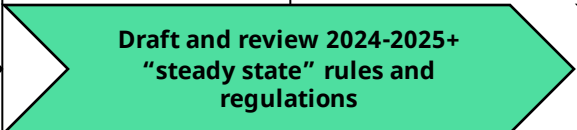
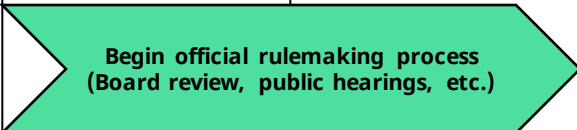
- ▶ Mute yourself when not speaking.
- ▶ Keep feedback centered on topic at hand.
- ▶ Stay engaged (e.g., actively participate and use the chat function).
- ▶ Be mindful of how much “air time” each member receives.
- ▶ All ideas are valued.

Materials (notes, slides) will be posted after the meeting for members who can not attend.

Today's discussion

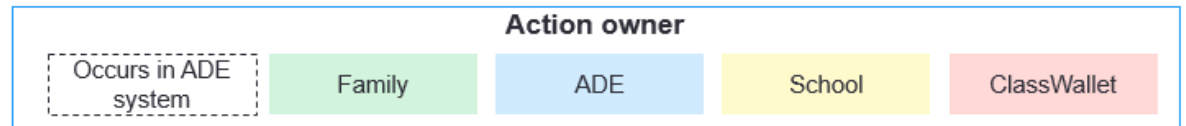
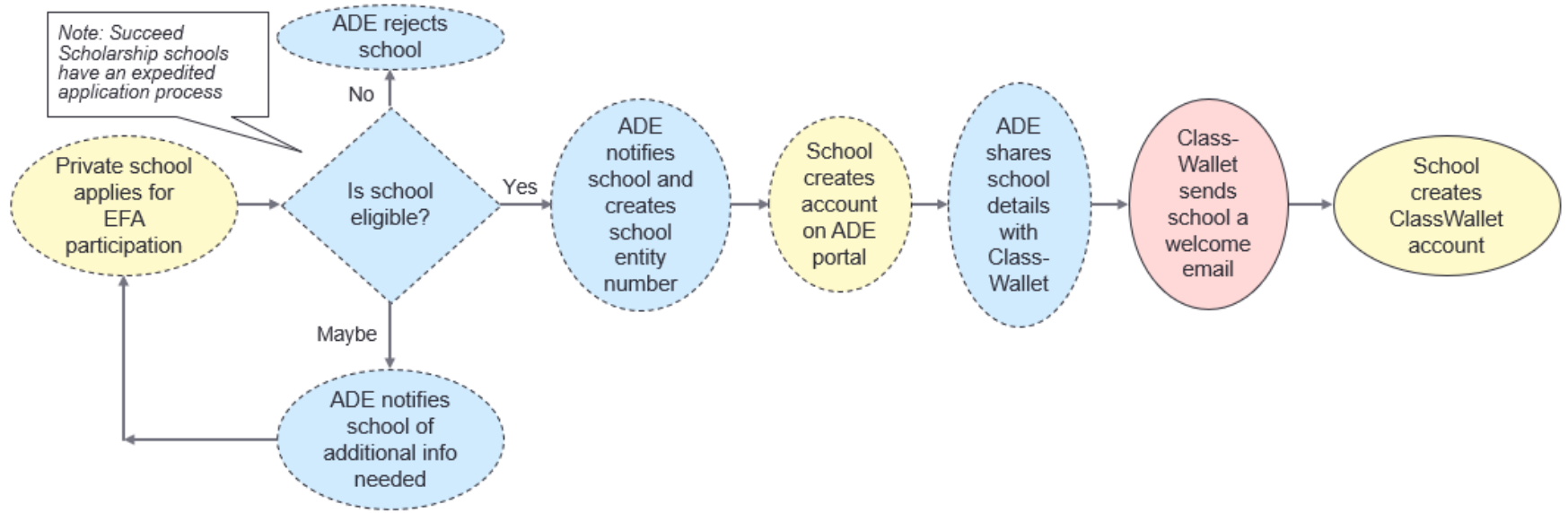
Topic	Timing
Overview	~5 mins
Process review and discussion	~20 mins
Breakout groups	~20 mins
Whole group share out	~10-15 mins

EFA Rollout: Where we are

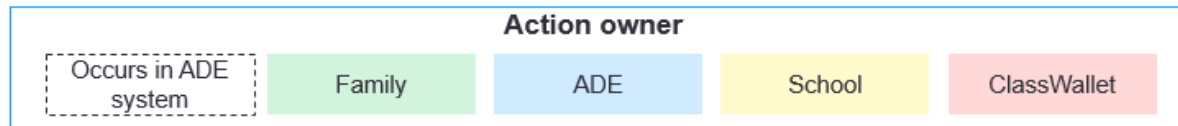
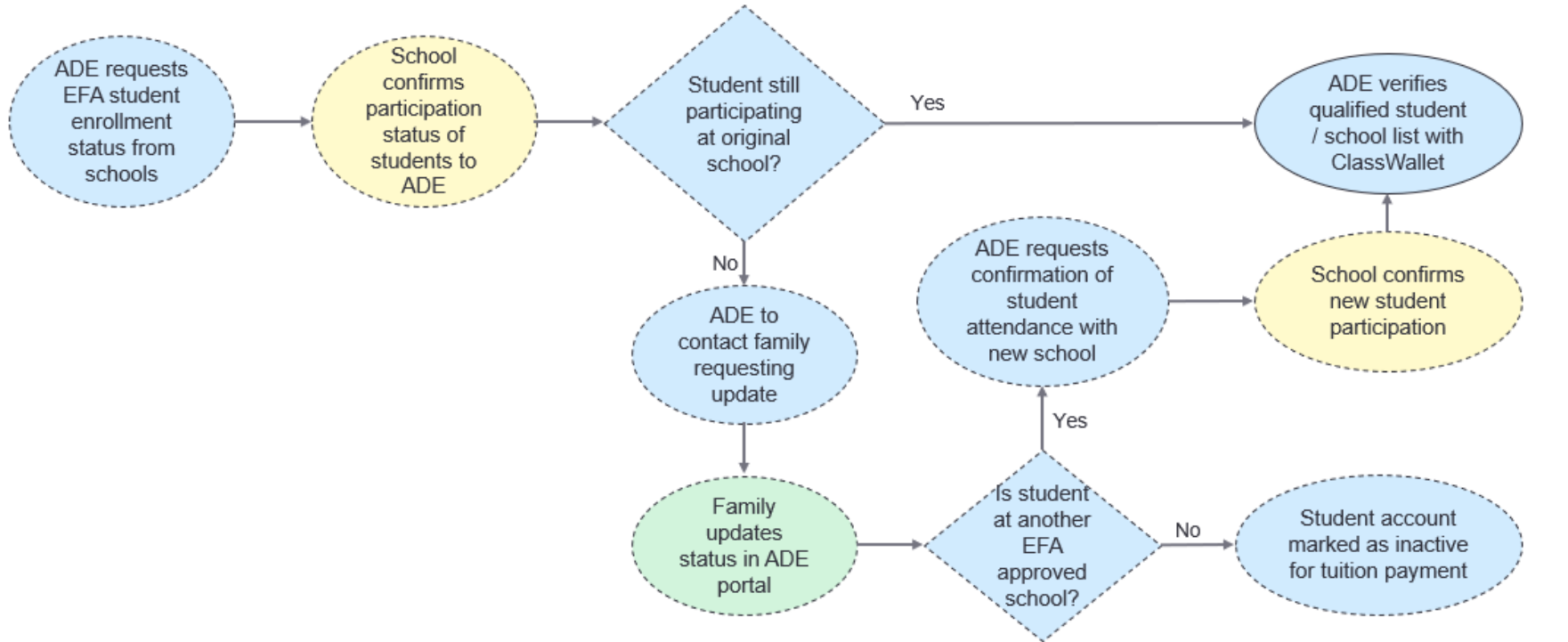
	May	June	July	August	September
Students		 Student application "go-live"			
	 Student applications reviewed on a rolling basis				
Schools	 Private school survey				
	 Recruit interested private schools	 Incremental school applications reviewed on a rolling basis; accepted schools are immediately added to public list of participating providers			
ADE					
	 Finalize 2023-2024 EFA guidance	 Draft and review 2024-2025+ "steady state" rules and regulations		 Begin official rulemaking process (Board review, public hearings, etc.)	

 Work group meeting (tentative)

School application process

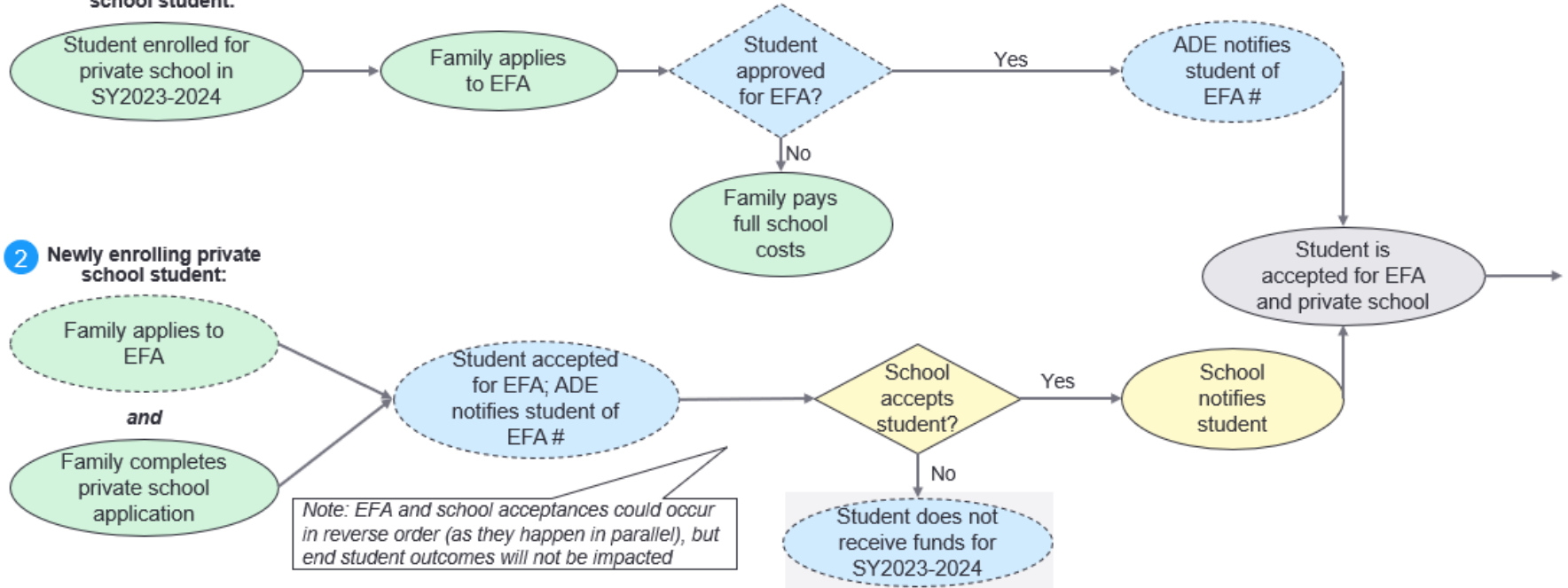


Periodic enrollment verification

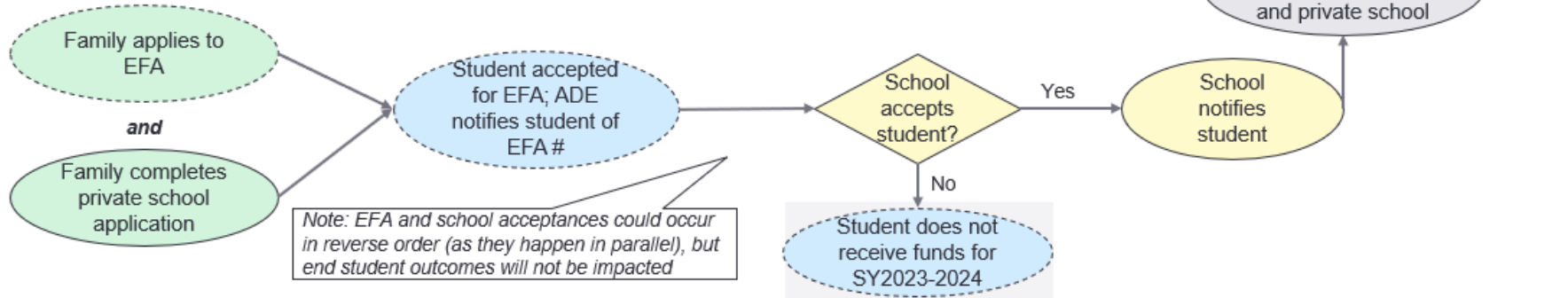


Family application process (1/2)

1 Already enrolled private school student:



2 Newly enrolling private school student:



Note: EFA and school acceptances could occur in reverse order (as they happen in parallel), but end student outcomes will not be impacted

Action owner

Occurs in ADE system	Family	ADE	School	ClassWallet
----------------------	--------	-----	--------	-------------

Family application process (2/2)

